

## Land Solutions - Wheel Mounted Living Quarters

### WHEEL MOUNTED ACCOMMODATIONS

#### COMPANY MAN UNIT - ELITE

Designed based on customer feedback and includes features to provide a more soundproof environment to make living near a drilling rig more like living at home. The Elite living quarters features stainless steel appliances and custom bedroom furniture.

**DIMENSIONS:** 72'L x 14'W / 74'L x 16'W



#### COMPANY MAN UNIT - PREMIUM

The Premium living quarter is a completely refurbished model with new trim, flooring, paneling, appliances, drop ceiling and furniture. Like the Elite, the Premium is designed to maximize comfort, convenience and workforce productivity.

**DIMENSIONS:** 70'L x 14'W / 72'L x 16'W



#### COMPANY MAN UNIT - STANDARD

The Standard living quarter is offered for our clients who seek quality and value housing without all the updates and comforts of the Elite and Premium options.

**DIMENSIONS:** 70'L x 14'W / 72'L x 16'W

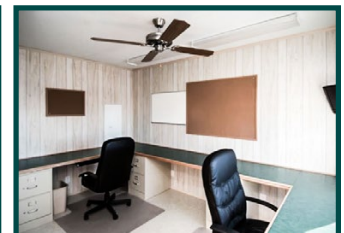
**FLOORPLAN:** 1 Bedroom / 2 Bedrooms with Office



#### ONE/TWO/THREE BEDROOM UNIT

We offer various layouts to accommodate your onsite workers in one, two, and three bedroom units. Our diverse fleet allows us to develop a custom solution to comfortably accommodate small or large crews onsite while staying within budget and footprint requirements.

**DIMENSIONS:** 54'L x 14'W / 72'L x 14'W / 74'L x 16'W

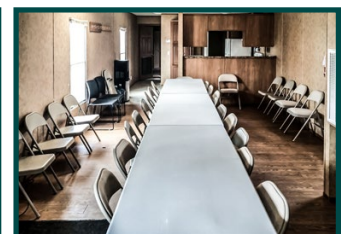


#### CONFERENCE/OFFICE UNIT

HB Rentals has various options for office trailers and meeting rooms to support your project team onsite. Offices can be set-up for management or the entire crew, and meeting rooms can support daily functions for safety, planning, and training.

**DIMENSIONS:** 54'L x 14'W / 72'L x 14'W

**FLOORPLAN:** 1-3 Offices, Bathrooms, Break rooms

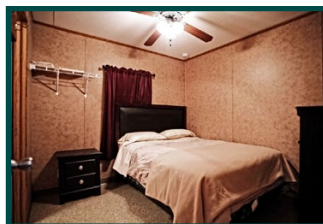


## DIRECTIONAL DRILLER UNIT

The directional drilling unit is similar to the company man unit with the exception that it is outfitted to the functional needs of supporting drilling operations. These units are larger to accommodate daily operational needs.

**DIMENSIONS:** 70'L x 14'W / 72'L x 16'W

**FLOORPLAN:** 1-2 Bedrooms with Office



## CREW HOUSING UNIT

Crew house units are ideal for remote locations in which the operator prefers to have the crew stay on site. Crew houses can comfortably accommodate up to 12 personnel in two or three bedroom layouts.

**DIMENSIONS:** 70'L x 14'W / 72'L x 16'W

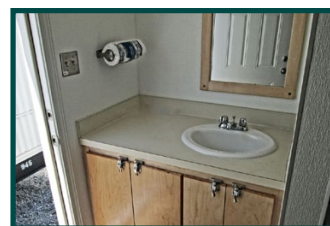
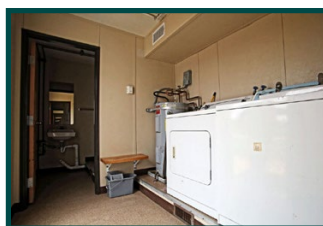


## GENERAL PURPOSE/SOWER-CHANGE

General purpose units are versatile in use. They can be outfitted for laundry, bath and laundry, recreation, safety or for other purposes. The shower/change house is a specialized unit that allows for extra restroom and laundry capacity.

**DIMENSIONS:** 18'L x 8'W / 25'L x 8'W

**FLOORPLAN:** N/A



## OPERATING ESSENTIALS

HB Rentals offers a wide range of operating essential services to keep your project operating and workforce productive.



HB Rentals  
**COMMUNICATIONS**



HB Rentals  
**WATER SYSTEMS**



HB Rentals  
**LIGHTING SYSTEMS**



HB Rentals  
**SEWAGE SYSTEMS**



HB Rentals  
**POWER SYSTEMS**

## SITE SERVICES AND SUPPORT

Like most service businesses, HB Rentals is comprised of a dedicated team of operations support personnel and specialized service technicians who support projects year round. Clients select HB Rentals for our expertise, capabilities, quality products and reputation for reliability, but they stay with us because of our superior level of onsite service.

**SITE SURVEY & PLANNING | MOBILIZATION & INSTALLATION | OPERATIONAL SUPPORT**

**BULK WATER DELIVERY SERVICE | SEWAGE HAULING SERVICE | TRASH HAULING SERVICE**

more info at [www.hbrentals.com](http://www.hbrentals.com)

### Regional Offices

#### Corporate Headquarters

5813 Highway 90 East  
Broussard, LA 70518 USA  
Tel +1 337 839 1641  
Toll Free 800 262 6790

#### Americas Corporate Sales

11330 Clay Road  
Ste 200  
Houston, TX 77041 USA  
Tel +1 281 999 0047  
Fax +1 281 999 6505  
Toll Free 866 999 0040

#### Europe, Middle East Africa, Asia-Pacific

Howe Moss Drive  
Kirkhill Industrial Estate,  
Dyce, Aberdeen, AB21 OGL  
Tel +44 1224 772304  
Fax: +44 1224 772641

### US Land Market: Operating/Service Facilities

**Colorado**  
Fort Lupton  
Grand Junction

**Louisiana**  
Broussard

**Oklahoma**  
El Reno

**Pennsylvania**  
Canonsburg

**Texas**  
Midland

**Wyoming**  
Casper  
Riverton

#### Global Markets

Asia-Pacific  
Europe  
Middle East  
Mexico  
Trinidad and Tobago  
United States/Canada